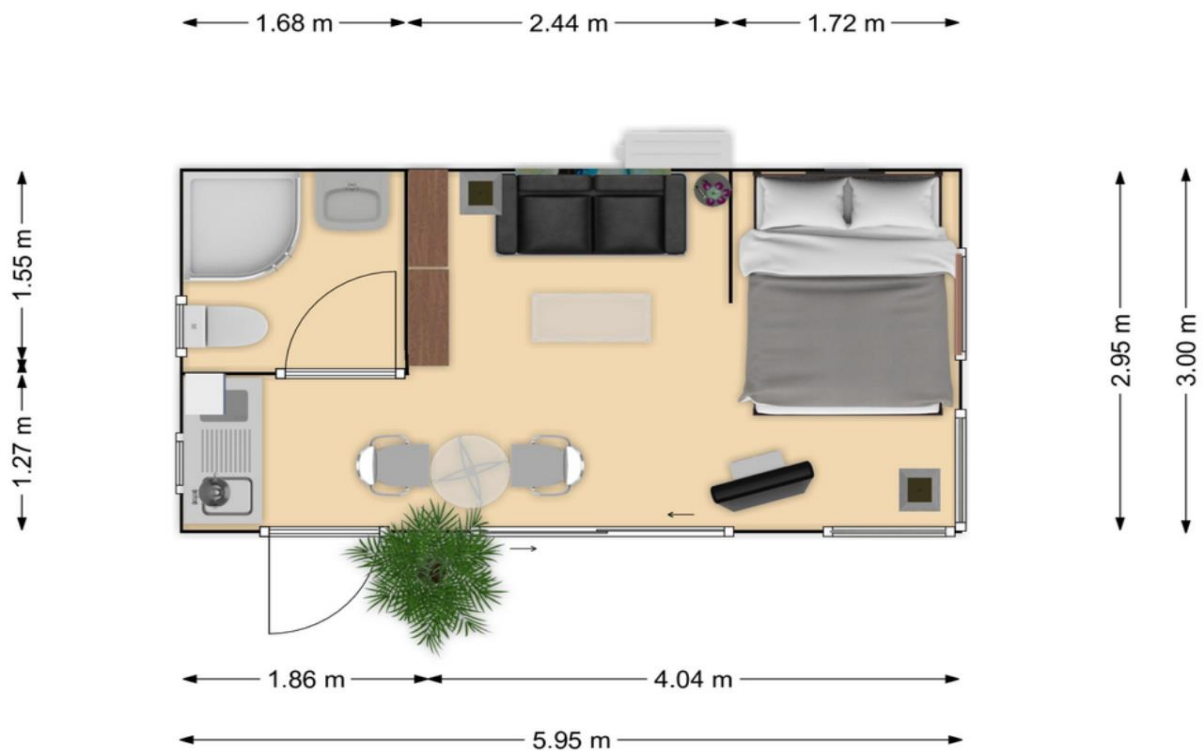
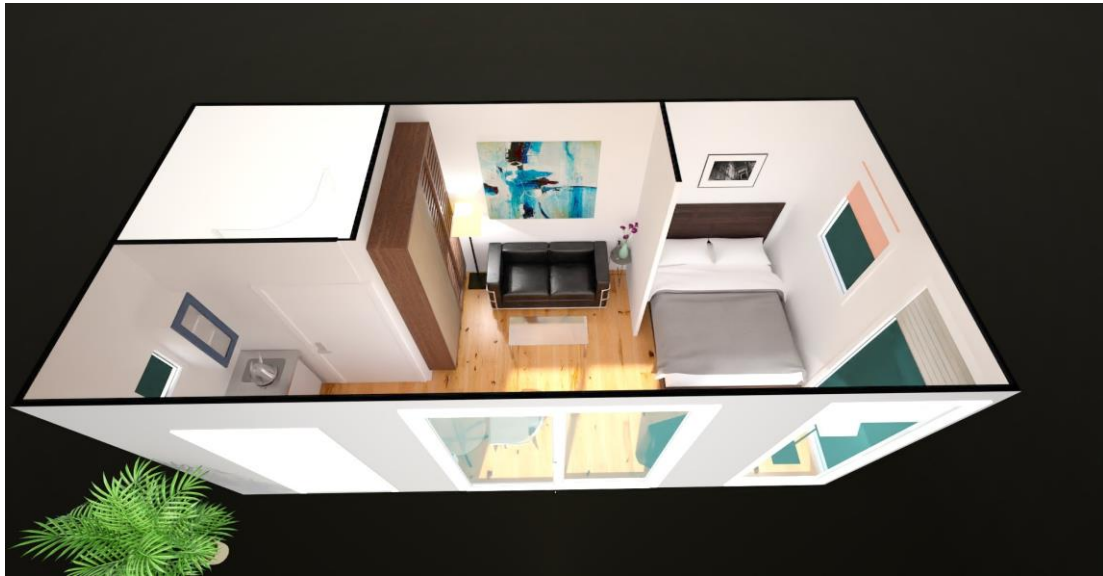


LIVING CONTAINER

The following “White Paper” provides you direction how to modalized a Standard container in a customized “Living Mobile House”. The three examples provide you an outline of the possibilities, build by one, two or three containers. The construction of our Containers modules provides you the possibility to add additional units at any direction to on Modul up to 2 levels, or you may use the roof of the container as a terrace. Important for us that you decide the customizing for your needs. Please provide us a sketch and we will send you an individual quote.

EXAMPLE I “SINGLE CONTAINER”

Configured by one Container in the size 2400x5950x2800 or 3000x5950x2800



LIVING CONTAINER

EXTRA MATERIAL

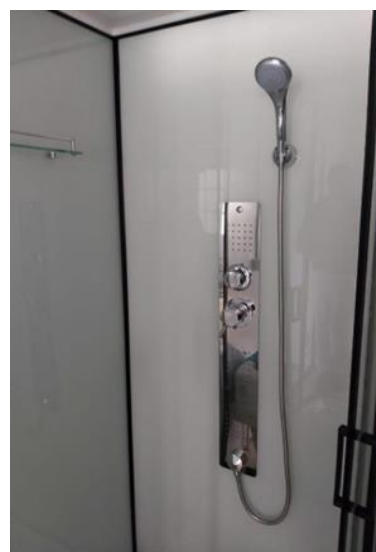
- | | |
|--|-------------|
| 1) 1 x SLIDING DOOR | 2000 x 2560 |
| 2) 2 x FIXED WINDOWS | 1000 x 2560 |
| 3) 1x WINDOW COULD UNCLOSE | 920 x 1000 |
| 4) 2x WINDOW BATHROOM/KITCHEN ROOM COULD UNCLOSE | 500 x 500 |

Note: In the material list are shown recommended sizes of sliding doors and windows. Other dimensions can be installed depending on client's needs. The price is formed according to size of the items.

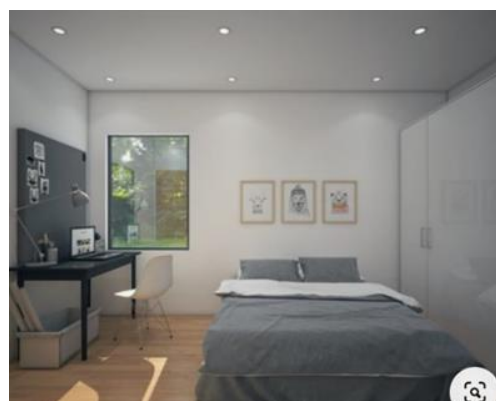
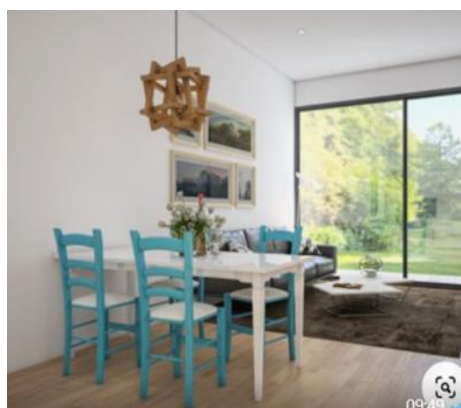
- | | |
|--|------------|
| 5) 1x BATHROOM DOOR | 700 x 2050 |
| 6) 1 x DRAINAGE (FRONT) | |
| 7) EXTRA INTERNAL WALLS | |
| 8) DECORATED WALL PANELS | |
| 9) JALOUSIE INSIDE AND OR OUTSIDE MANUEL OR ELECTRIC | |

EXAMPLE OF THE BATHROOM INTERIOR

The following images show only examples of bathroom decoration. The entire interior equipment can be personalized according to the wishes and preferences of the client. Desired sanitary facilities and other equipment will be confirmed with us before ordering.



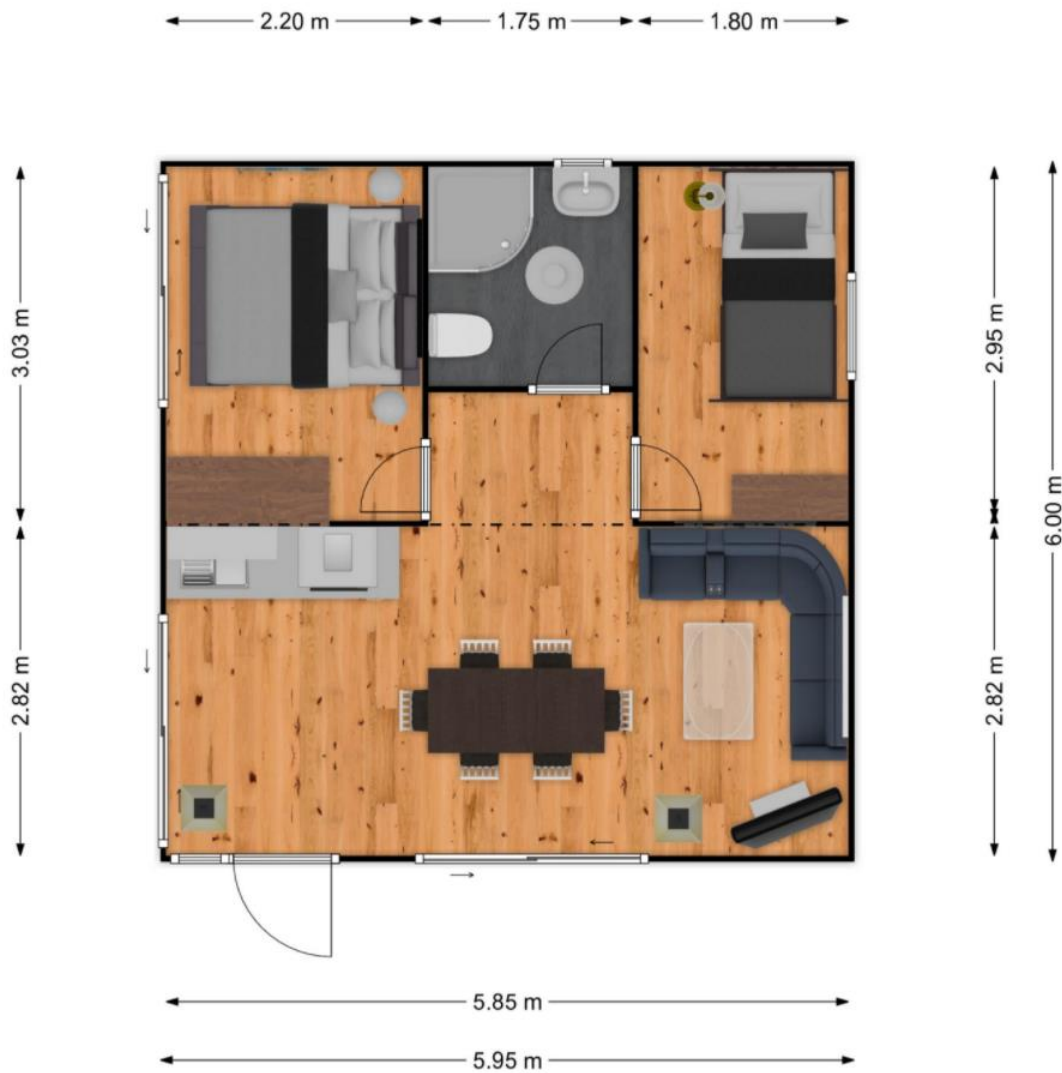
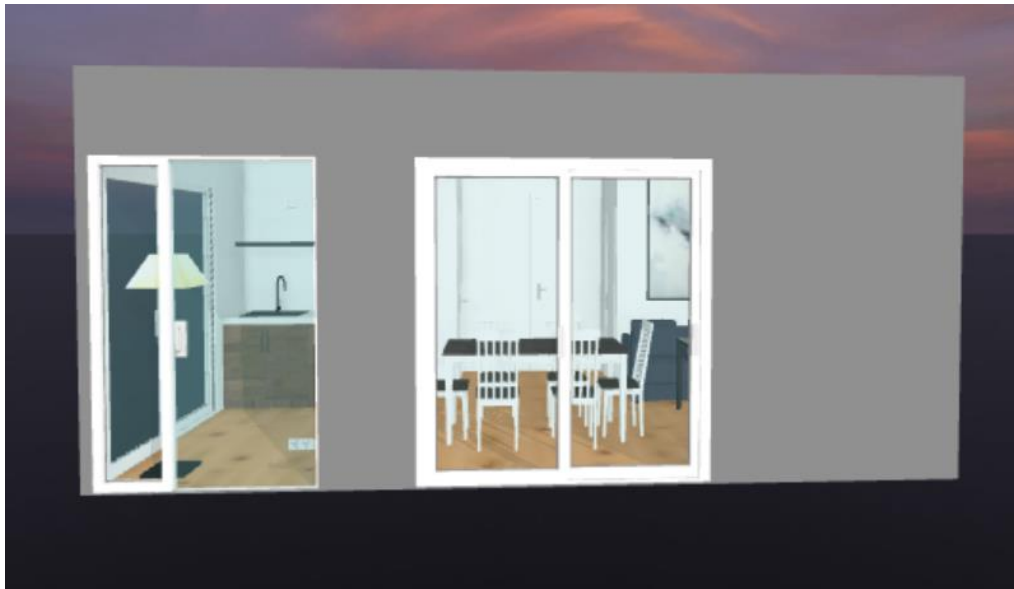
EXAMPLE OF THE CEILING AND LIGHTNING



LIVING CONTAINER

EXAMPLE II "DOUBLE CONTAINER"

Configured by two Containers in the size 2400x5950x2800 and or 3000x5950x2800



LIVING CONTAINER

EXTRA MATERIAL

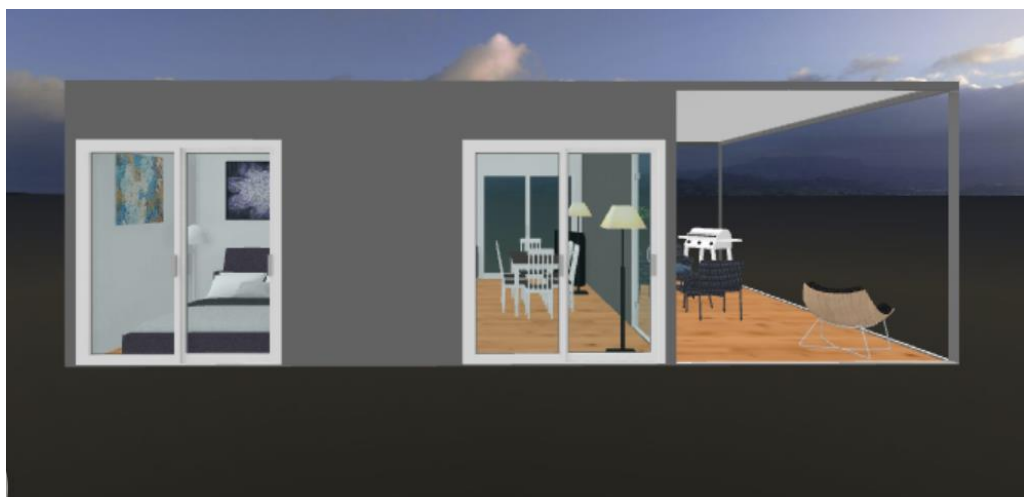
1) 3 x SLIDING DOOR	2000 x 2560
2) 1 x FIXED WINDOW	500 x 2560
3) 1x WINDOW COULD UNCLOSE	920 x 1000
4) 1x WINDOW BATHROOM COULD UNCLOSE	500 x 500
5) 3x BATHROOM/ SLEEPING DOORS	700 x 2050

Note: In the material list are shown recommended sizes of sliding doors and windows. Other dimensions can be installed depending on client's needs. The price is formed according to size of the items.

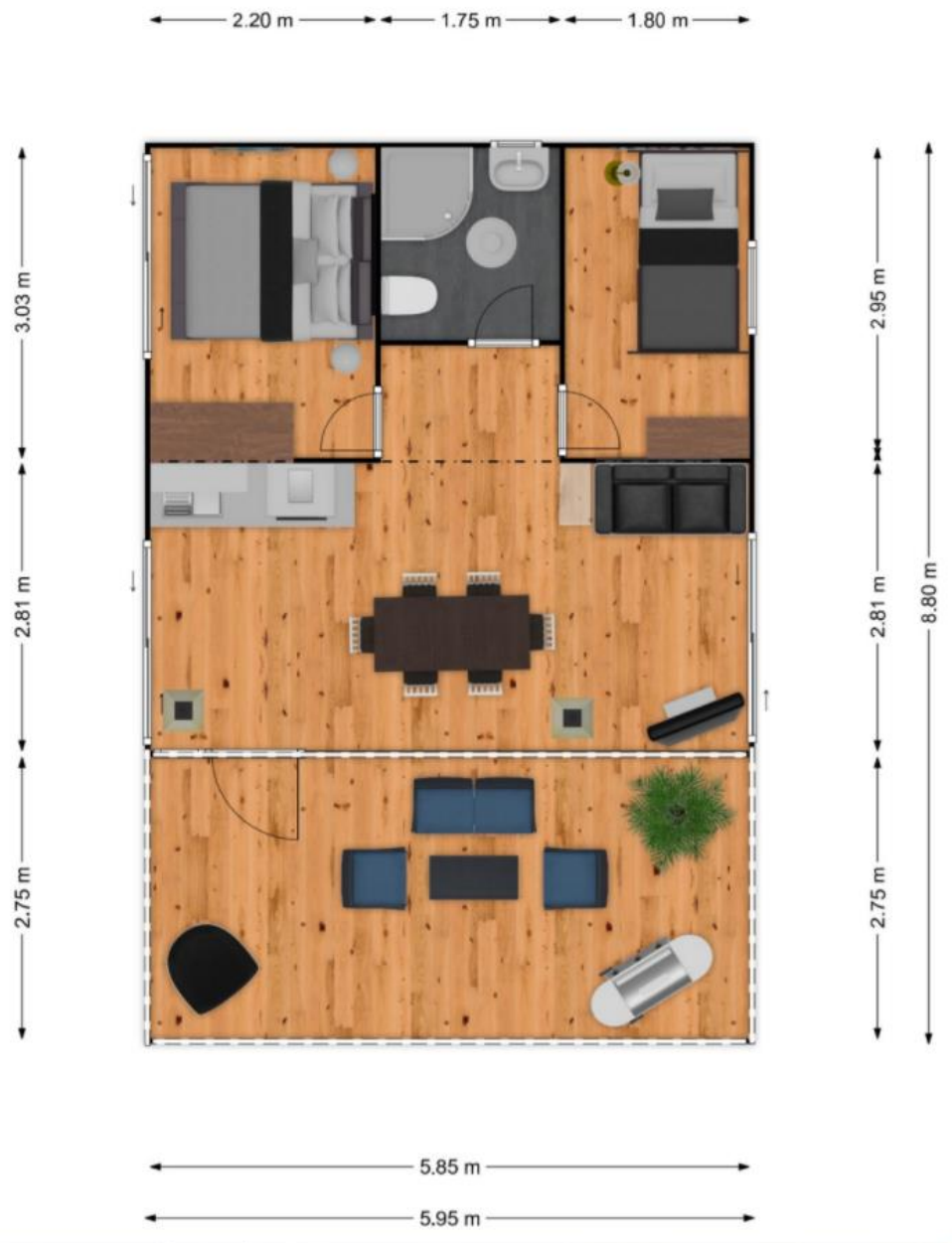
- 6) 3 x DRAINAGE SYSTEM
- 7) EXTRA INTERNAL WALLS
- 8) DECORATED WALL PANELS
- 9) JALOUSIE INSIDE AND OR OUTSIDE MANUEL OR ELECTRIC

EXAMPLE III "TRIPPLE CONTAINER" (WITH TERRACE)

Configured by three Containers in the size 2400x5950x2800 and or 3000x5950x2800



LIVING CONTAINER



LIVING CONTAINER

EXTRA MATERIAL

1) 3 x SLIDING DOOR	2000 x 2560
2) 1 x FIXED WINDOW	500 x 2560
3) 1x WINDOW COULD UNCLOSE	920 x 1000
4) 1x WINDOW BATHROOM COULD UNCLOSE	500 x 500
5) 3x BATHROOM/ SLEEPING DOORS	700 x 2050

Note: In the material list are shown recommended sizes of sliding doors and windows. Other dimensions can be installed depending on client's needs. The price is formed according to size of the items.

- 6) 3 x DRAINAGE SYSTEM
- 7) EXTRA INTERNAL WALLS
- 8) DECORATED WALL PANELS
- 9) JALOUSIE INSIDE AND OR OUTSIDE MANUEL OR ELECTRIC
- 10) TERACCE WITH FIXED ROOF

ALL EXTRAS CAN BE COSTOMIZED AND WILL BE PRE-MANUFACTURED AS PER YOUR REQUEST, THE ELECTRIC INSTALLATION AND THE SANITAER ENTRIOR AND INSTALLATION IS OPTIONAL AND MAY SLECTED BY YOU LOCALY!